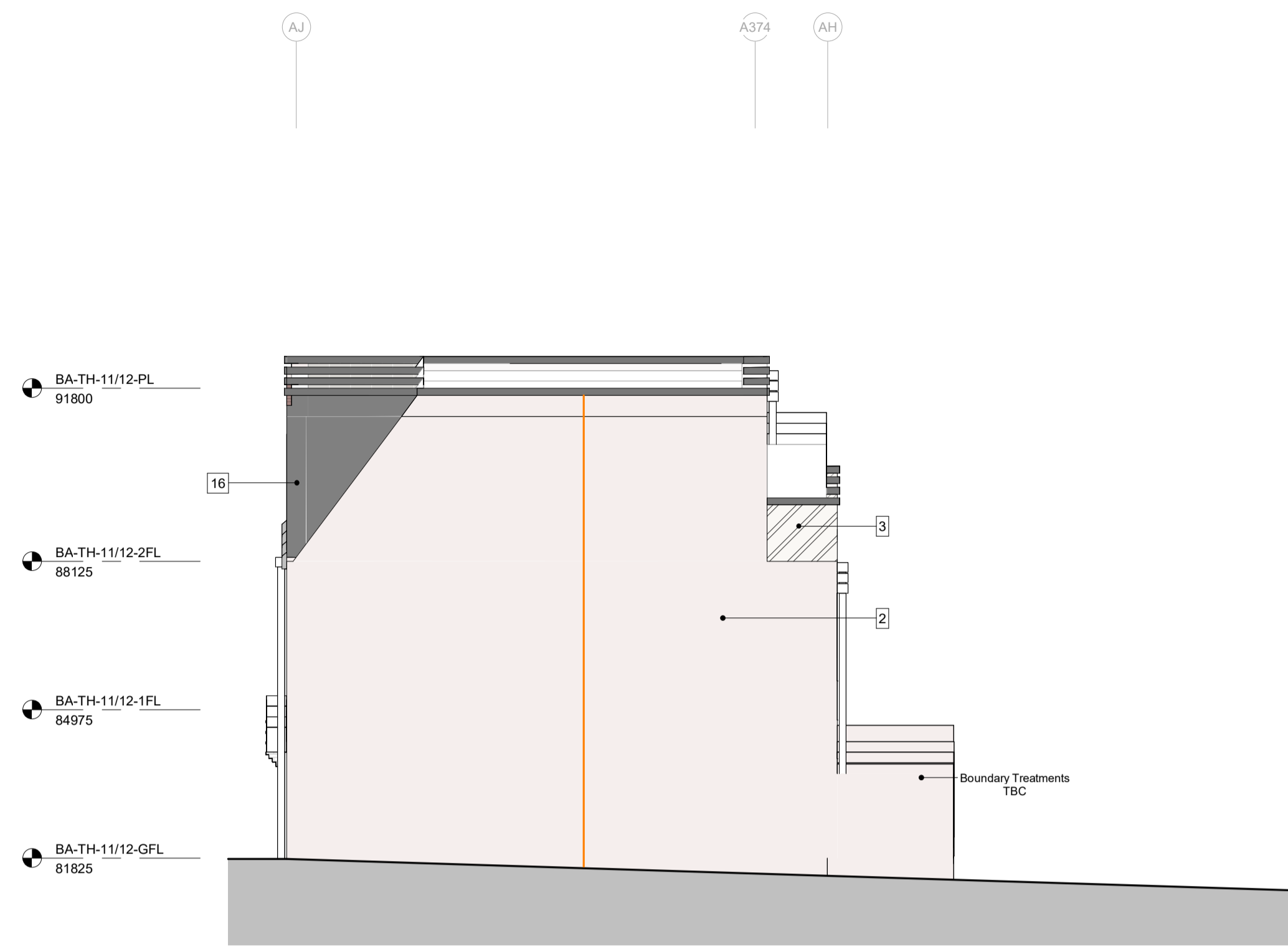




4 West Elevation (1)
1 : 100



1 West Elevation (2)
1 : 100

- MATERIALS KEY**
- 1 Clay facing brickwork Type 1
Bloombury (Crest)
(to be agreed in Stage 4)
 - 2 Facing brickwork Type 2
Grafton (Kings court)
(to be agreed in Stage 4)
 - 3 Clay facing brickwork Type 3
White Engobe (Ibstock)
(to be agreed in Stage 4)
 - 4 Clay facing brickwork Type 4
Harborne Red Multi (Vandersanden)
(to be agreed in Stage 4)
 - 5 Render external wall
Above and below windows
Red - exact colour tbc (Permarock)
 - 6 Air brick grills (Mechanical vent)
RAL tbc to match brickwork
 - 7 Air brick grills (Slab vent.)
Masonry to match host wall
 - 8 Recessed brickwork
Above and below windows
to match DPC brickwork i.e. 1.
 - 9 Vertical glazing
Residential windows
RAL 8019 (tba)
Retail Windows
RAL 8019 (tba)
White brick areas
RAL 9001 (tba)
 - 10 Roof windows
Frame RAL 9004 (tba)
 - 11 Aluminium metal cladding panels
RAL 9004 (tba)
 - 12 PPC Aluminium coping
(to match brickwork, be agreed in Stage 4)
 - 13 Spandrel panels
RAL to match window
 - 14 Railing/External metal stairs
RAL 9004 (tba)
 - 15 Rainwater pipes and gutters
RAL 9004 (tba)
 - 16 Clay facing brickwork Type 5
Blue / Dark brick
(to be agreed in Stage 4)
 - 17 Pitched roof tiling
Marley Duo Edgemere / Modern
(to be agreed in Stage 4)
 - 18 Cast stone components & panels
Buff / Red
 - 19 External Doors
Colours as per 9.
 - 20 Decorative Brickwork Type 1
(Four sided surround)
 - 21 Brick Faced Steel Lintel
 - 22 Decorative brickwork Type 2
(Soldier course brickwork)
 - 23 Wildlife Enclosure Box
 - 24 Decorative Brickwork Type 3
(Sawtooth brickwork)

Notes:

For rooftop plant please refer to MEP drawings.
For external gradients please refer to Civil and Landscape drawings.

MEP ventilation grill locations are subject to detailed design by MEP; for amounts please refer to MEP drawings.

Slab ventilation grill locations are subject to finalized calculations; locations to be indicated on construction drawings.

Please refer to CWA drawing 2150 for typical junction details for flats.

Please refer to CWA drawing 2151 for typical junction details for townhouses.

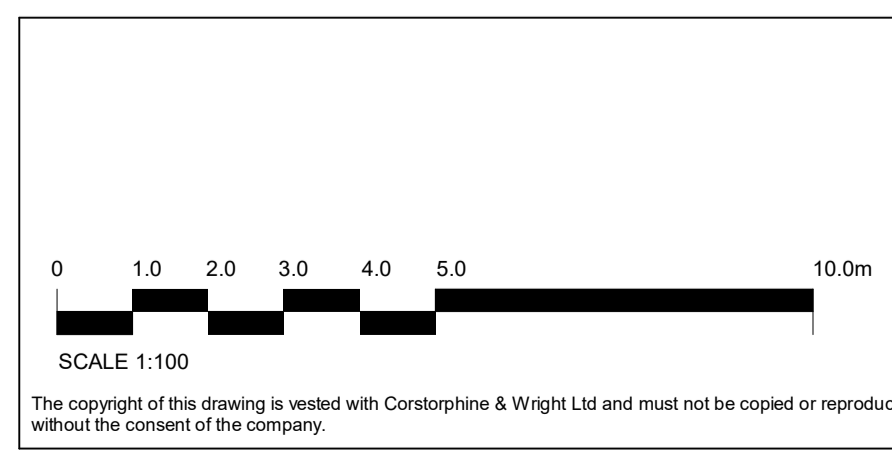
Please refer to CWA drawing 2152 for typical balcony details.

Location and number of bird and bat boxes subject to further development during next stage.

— Movement Joints
- - - Movement Joints (Hidden)
subject to further co-ordination during next stage



3 West Elevation (3)
1 : 100



Notes

Drawing to be read in conjunction with the following CWA drawings:
 0400 Series - Fire Strategy
 2000 Series - General Arrangement Plans
 2100 Series - General Arrangement Sections and Elevations
 2200 Series - Wall Types
 2400 Series - General Arrangement Elevations
 3500 Series - Reflected Ceiling Plans
 4100 Series - Finishes

Subject to detailed coordination with Structure, MEP, Fire and Acoustic design.

Subject to detailed coordination with Structure, MEP, Fire and Acoustic design.

Note that some occupancies, apartment numbers, and names have been updated in revision P02.

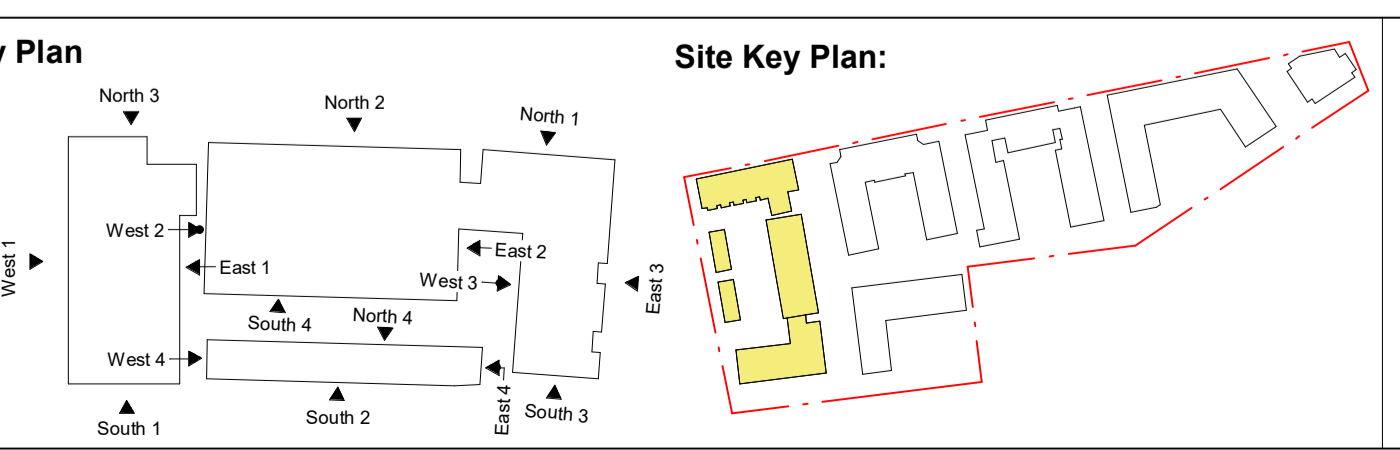
Rev.	Description	Date	Drw.	CHK.
P02	Updated to suit Graham comments.	19.12.25	TB	KK
P01	First Issue	03.11.25	KK	TB

MEP / S.Eng Notes

Detailed design and final coordination of MEP items is subject to change once MEP information is received. Size, quantity and location of MEP equipment TBC following confirmation of MEP specifications and subsequent coordination.

Detailed design and final coordination of S.Eng items is subject to change once S.Eng information is received and subsequently fully coordinated.

External landscape design to Landscape architects design, please refer to ARES3 information.



Client:
Graham Construction

Project:
MK Agora

Drawing Title:
Block A - GA Elevations - Sheet 3 of 4

Drawing Status:
PRELIMINARY

Corstorphine & Wright
 Birmingham Studio
 Alpha Building, Suffolk Street Queensway, Birmingham, B1 1TT
 0121 737 8350
 corstorphine-wright.com

Drawing No.
250724-CWA-BA-XX-D-A-2502

Project No.	Drawn	Checked	Size	Scale	Date
250724	AH	TB	A1	As indicated	05.11.2025

Revision
P02