



1 South Elevation (C)

- MATERIALS KEY**
- 1 Clay facing brickwork Type 1
Bloomsbury (Crest)
(to be agreed in Stage 4)
 - 2 Facing brickwork Type 2
Grafton (Kings court)
(to be agreed in Stage 4)
 - 3 Clay facing brickwork Type 3
White Engobe (Ibstock)
(to be agreed in Stage 4)
 - 4 Clay facing brickwork Type 4
Harborne Red Multi (Vandersanden)
(to be agreed in Stage 4)
 - 5 Render external wall
Above and below windows
Red - exact colour tbc (Permarock)
 - 6 Air brick grills (Mechanical vent.)
RAL tbc to match brickwork
 - 7 Air brick grills (Slab vent.)
Masonry to match host wall
 - 8 Recessed brickwork
Above and below windows
to match DPC brickwork i.e. 1.
 - 9 Vertical glazing
Residential windows
RAL 8019 (tba)

Retail Windows
RAL 8019 (tba)

White brick areas
RAL 9001 (tba)
 - 10 Roof windows
Frame RAL 9004 (tba)
 - 11 Aluminium metal cladding panels
RAL 9004 (tba)
 - 12 PPC Aluminium coping
(to match brickwork; be agreed in Stage 4)
 - 13 Spandrel panels
RAL to match window
 - 14 Railing/External metal stairs
RAL 9004 (tba)
 - 15 Rainwater pipes and gutters
RAL 9004 (tba)
 - 16 Clay facing brickwork Type 5
Blue / Dark brick
(to be agreed in Stage 4)
 - 17 Pitched roof tiling
Marley Duo Edgemere / Modern
(to be agreed in Stage 4)
 - 18 Cast stone components & panels
Buff / Red
 - 19 External Doors
Colours as per 9.
 - 20 Decorative Brickwork Type 1
(Four sided surround)
 - 21 Brick Faced Steel Lintel
 - 22 Decorative Brickwork Type 2
(Soldier course brickwork)
 - 23 Wildlife Enclosure Box
 - 24 Decorative Brickwork Type 3
(Sawtooth brickwork)

Notes:

For rooftop plant please refer to MEP drawings.

For external gradients please refer to Civil and Landscape drawings.

MEP ventilation grill locations are subject to detailed design by MEP; for amounts please refer to MEP drawings.

Slab ventilation grill locations are subject to finalized calculations; locations to be indicated on construction drawings.

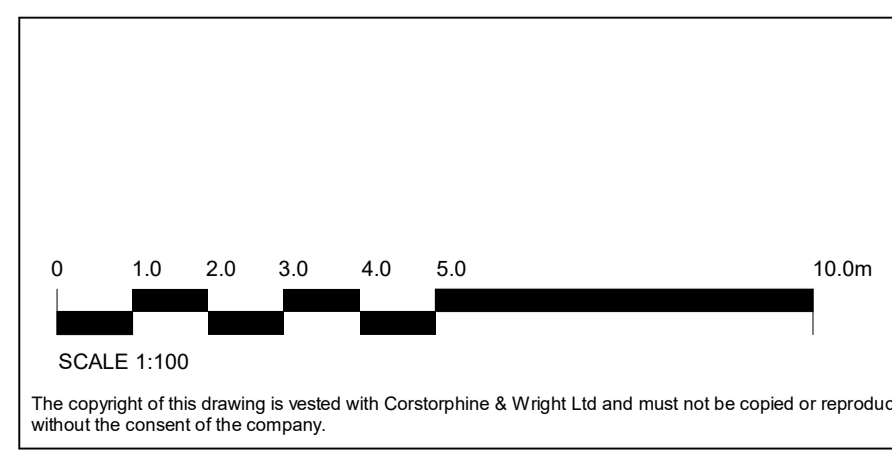
Please refer to CWA drawing 2150 for typical junction details for flats.

Please refer to CWA drawing 2151 for typical junction details for townhouses.

Please refer to CWA drawing 2152 for typical balcony details.

Location and number of bird and bat boxes subject to further development during next stage.

— Movement Joints
- - - - - Movement Joints (Hidden)
subject to further co-ordination during next stage



Notes
Drawing to be read in conjunction with the following CWA drawings:

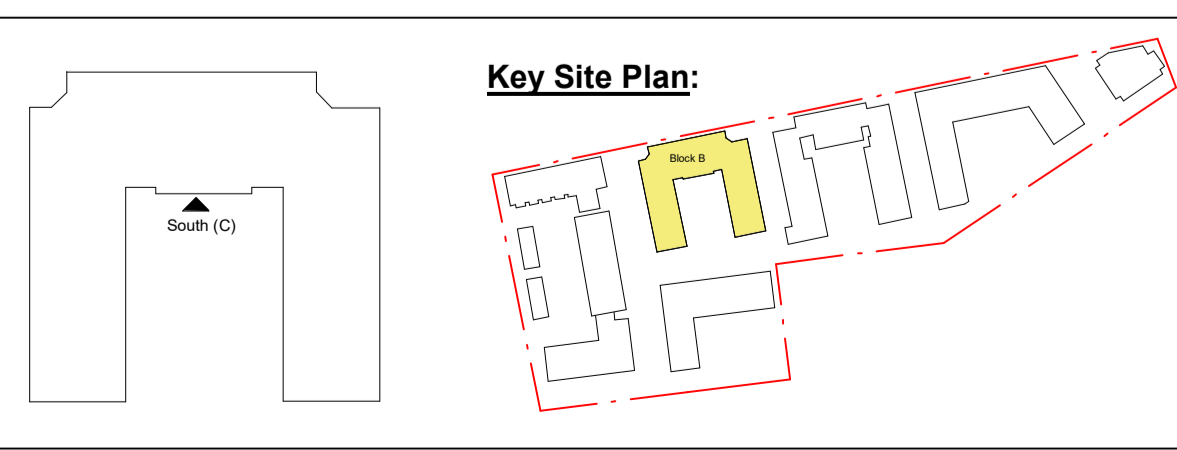
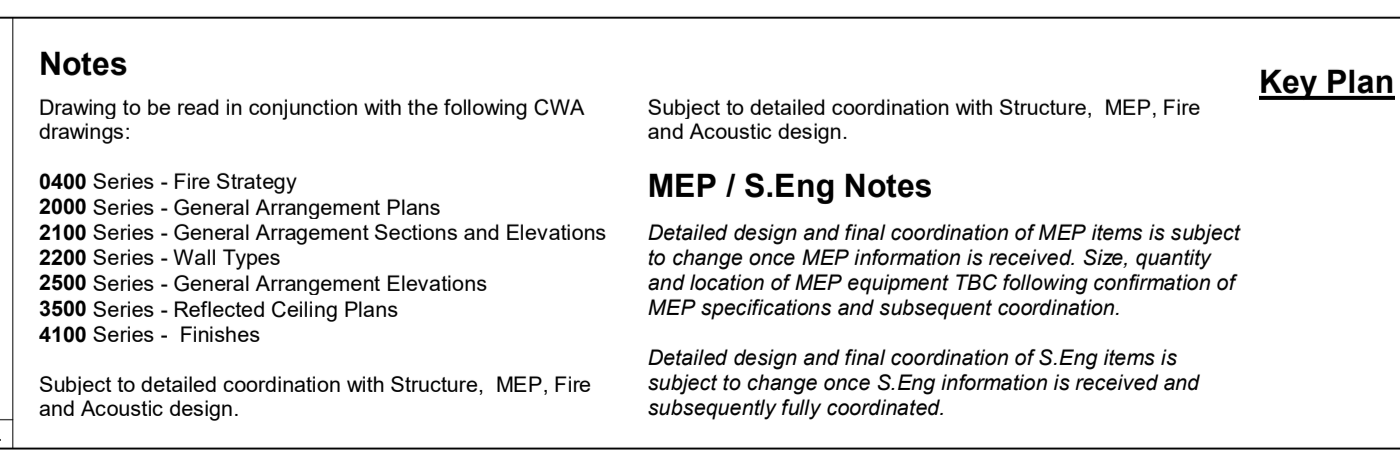
0400 Series - Fire Strategy
2000 Series - General Arrangement Plans
2100 Series - General Arrangement Sections and Elevations
2200 Series - Wall Types
2500 Series - General Arrangement Elevations
3500 Series - Reflected Ceiling Plans
4100 Series - Finishes

Subject to detailed coordination with Structure, MEP, Fire and Acoustic design.

MEP / S.Eng Notes
Detailed design and final coordination of MEP items is subject to change once MEP information is received. Size, quantity and location of MEP equipment TBC following confirmation of MEP specifications and subsequent coordination.

Detailed design and final coordination of S.Eng items is subject to change once S.Eng information is received and subsequently fully coordinated.

Rev.	Description	Date	Drw.	CHK.
P02	Updated to suit Graham comments.	19.12.2025	TB	KK
P01	First Issue	03.11.2025	DD	TB



Corstorphine & Wright

Birmingham Studio
Alpha Building, Suffolk Street Queensway, Birmingham, B1 1TT
0121 737 8350

corstorphine-wright.com

Drawing No.
250724-CWA-BB-XX-D-A-2503

Project No. Drawn Checked Size Scale Date
250724 DD TB A1 1:100 05.11.2025

Revision
P02